



# PRECISION MOULDS & COMPONENTS

(AN ISO 14001:2015 CERTIFIED COMPANY)

Head office: - 817 Arthala Khara Kwan Chowk , Mohan Nagar Ghaziabad (U.P) 201007

Works: - 70, Anand Industrial Estate , Mohan Nagar, Ghaziabad (U.P) 201007

PH.; - +91- 9899218526 , +91- 9654266320

Website : [www.pmctech.in](http://www.pmctech.in)

E-mail: [info@pmctech.in](mailto:info@pmctech.in) , [precision.m@rediffmail.com](mailto:precision.m@rediffmail.com)

## COMPANY PROFILE

GSTIN : 09AONPS8794J1ZP

TIN NO.09890700930 dt. 18/7/2000

C.S.T.NO. GC-5053099 dt. 21/8/2000

S.S.I.NO.0909018535

IEC NO. 0506008533

UAN : UP29B0004430

PAN NO.ANOPS8794J

# TABLE OF CONTENTS

- **Company Profile.**
- **Organization Chart.**
- **Quality Policy.**
- **Quality Our Commitment.**
- **Trade Offer.**
- **Manufacturing Process.**
- **Handling of Enquiry.**
- **Preparation of Sample & Pilot Lot.**
- **Equipment List.**

# COMPANY PROFILE

- **2000** - Established as small Tool Room
- **2002** - Tie up with **Vibracoustic Noida PVT. Ltd.** (Formerly Trelleborg Automotive India Pvt. Ltd.) for their Tool Room works. Also we are manufacturing components till now.
- **2006** - Tie up with **Motherson Group** for making their Tooling and Dies. Also we are manufacturing components till now.
- **2009** - Certified for ISO 9001:2008.
- 2018 – Certified for ISO 14001 : 2015

# COMPANY PROFILE

- "We, at Precision Moulds & Components. are dedicated to completely satisfying our customers needs and expectations. We will continually strive for excellence by improving the way we do business and anticipating our customers changing needs."
- We specialize in Injection Moulds, Rubber Mould, Jig Fixtures, Plastic Components, Metal Components, Turning Components, In-House design and development of dies, machining jigs & fixtures, gauges and manufacturing processes.
- Presently manufacturing components for Cars, Motor Cycles , Electrical & Electronic Indl. Components and Industrial Specialization Machines.
- PMC has a documented quality system registered to ISO 14001: 2015. With our in process, receiving and final inspections our customers can be assured of our products quality. We have well trained employees and the equipment and know how to do the job correctly to the most stringent of tolerances.

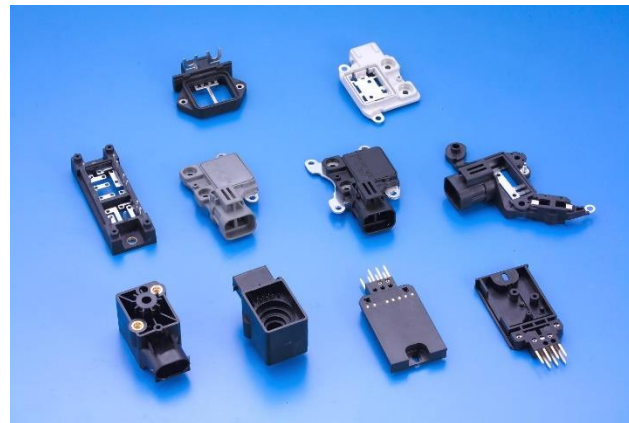
# Our Major Clients & Many More...

1. **Vibracoustic Noida PVT. Ltd. (MNC) PHASE II, NOIDA.**
2. **SAMVARDHANA MOTHERSON LTD. SEC 58 NOIDA (MNC)**
3. **SMIEL- A UNIT OF MOTHER SON SUMI SYSTAME LTD. SEC -59 (MNC) NOIDA.**
4. **CLEAR PLUS INDIA LTD. (MNC) (NSEZ) PHASE II NOIDA.**
5. **CONTINENTAL INDIA PVT. L.T.D (MNC) BADHKHALSA (SONIPAT)**
6. **SHRI RAM PISTON & RING L.T.D GHAZIABAD**
7. **MOTHERSON AUTOMOTIVE TECNOLOGY & ENGINEERING. PHASE II, NOIDA**
8. **ITP Electronics Pvt. Ltd. SIDCUL ,Haridwar(U.K)**
9. **Grey Orange India(P) Ltd. Gurgoan, Haryana**
10. **LUMAX DK Auto India Ltd.**
11. **BONITA – CASA BRANDS INDIA PVT. LTD.**
12. **BHEL – Haridwar**

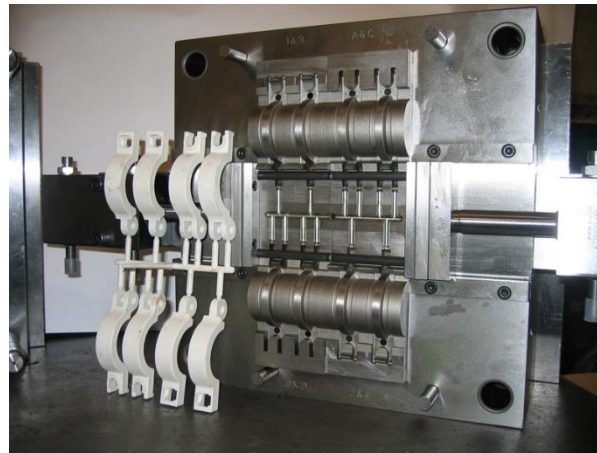
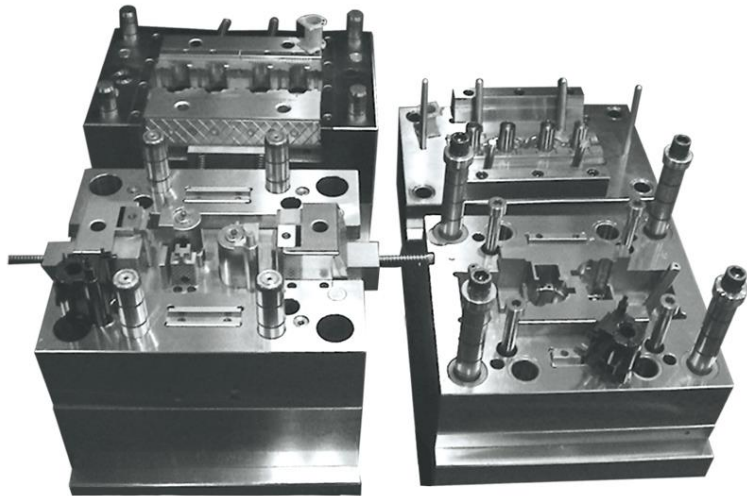
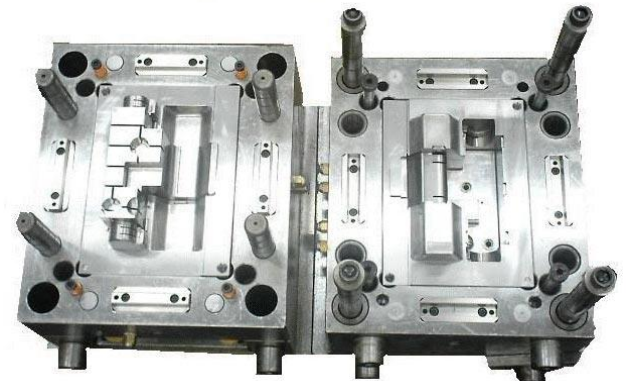
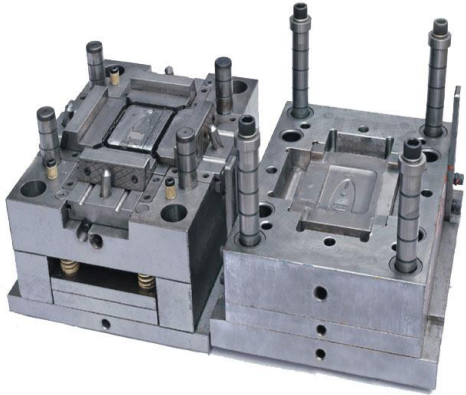
# WE FEEL PROUD TO BE VINDOR OF MILSTONE COMPANIES & MANY MORE....



# OUR MAJOR PLASTIC PRODUCTS



# TOOLS MANUFACTURED BY US..

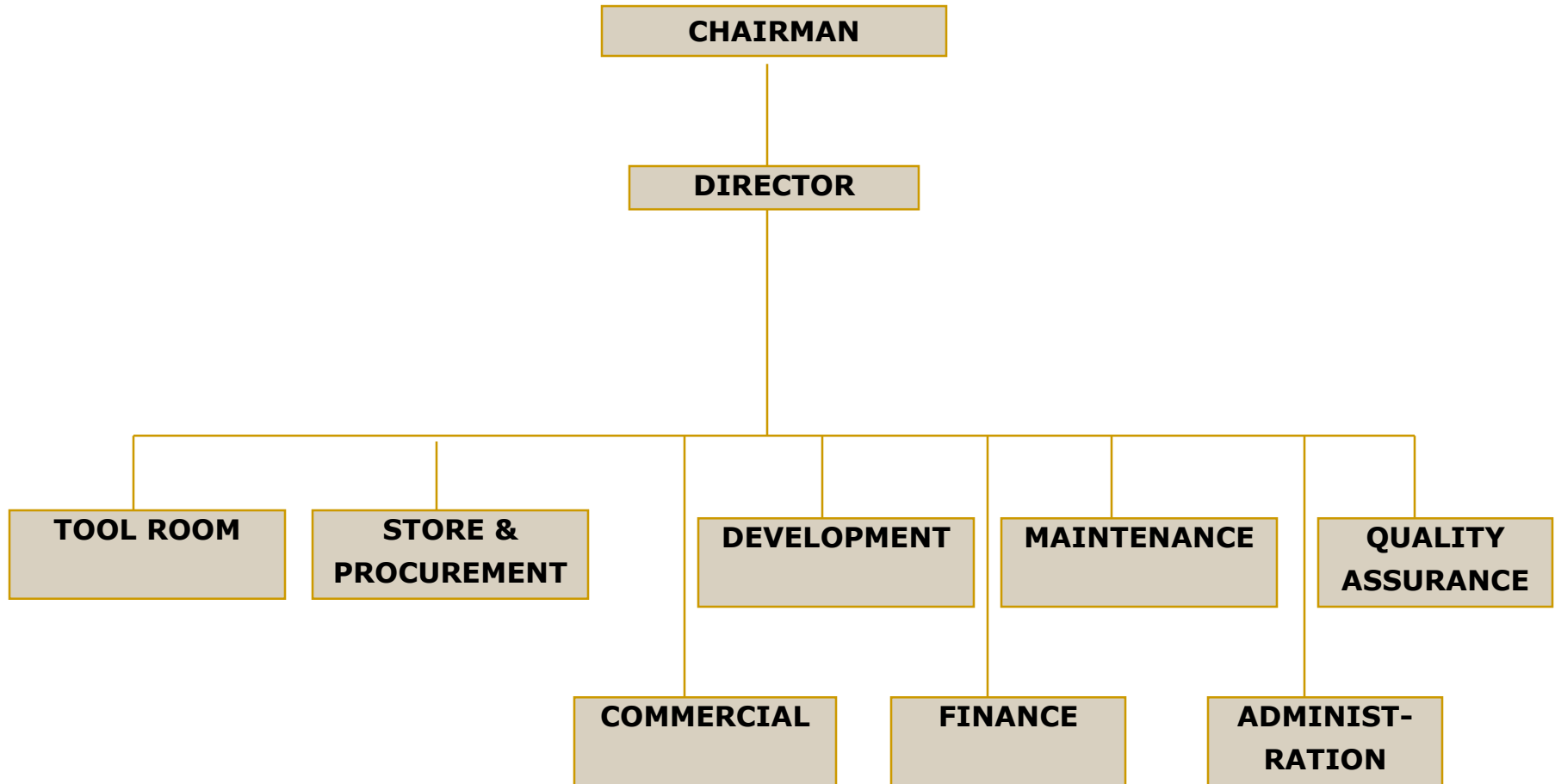




# COMPANY PROFILE

- Tool Room is the basic requirement of any engineering industry. This includes a machine shop with various R&D facility in this new prototype component can be developed and an economical process of its.
- Managers - 1
- Engineers - 3
- Administrative staff - 2
- Skilled Workers - 5
- Semi Skilled Workers - 10

# Organization Chart



# QUALITY POLICY

**To aggressively develop, manufacture and market our products to domestic and foreign clients, achieving highest level of customer satisfaction through:**

- Consistently meeting or exceeding customer requirements.
- Time bound deliveries.
- Concentrating our resources on designing and building quality into our products and services.
- Continuously improving process controls in all areas of our business.
- Encouraging our suppliers to enhance input quality.
- Attracting, retaining and developing motivated quality performers.
- Compliance to the legal and regulatory requirements applicable to our products.

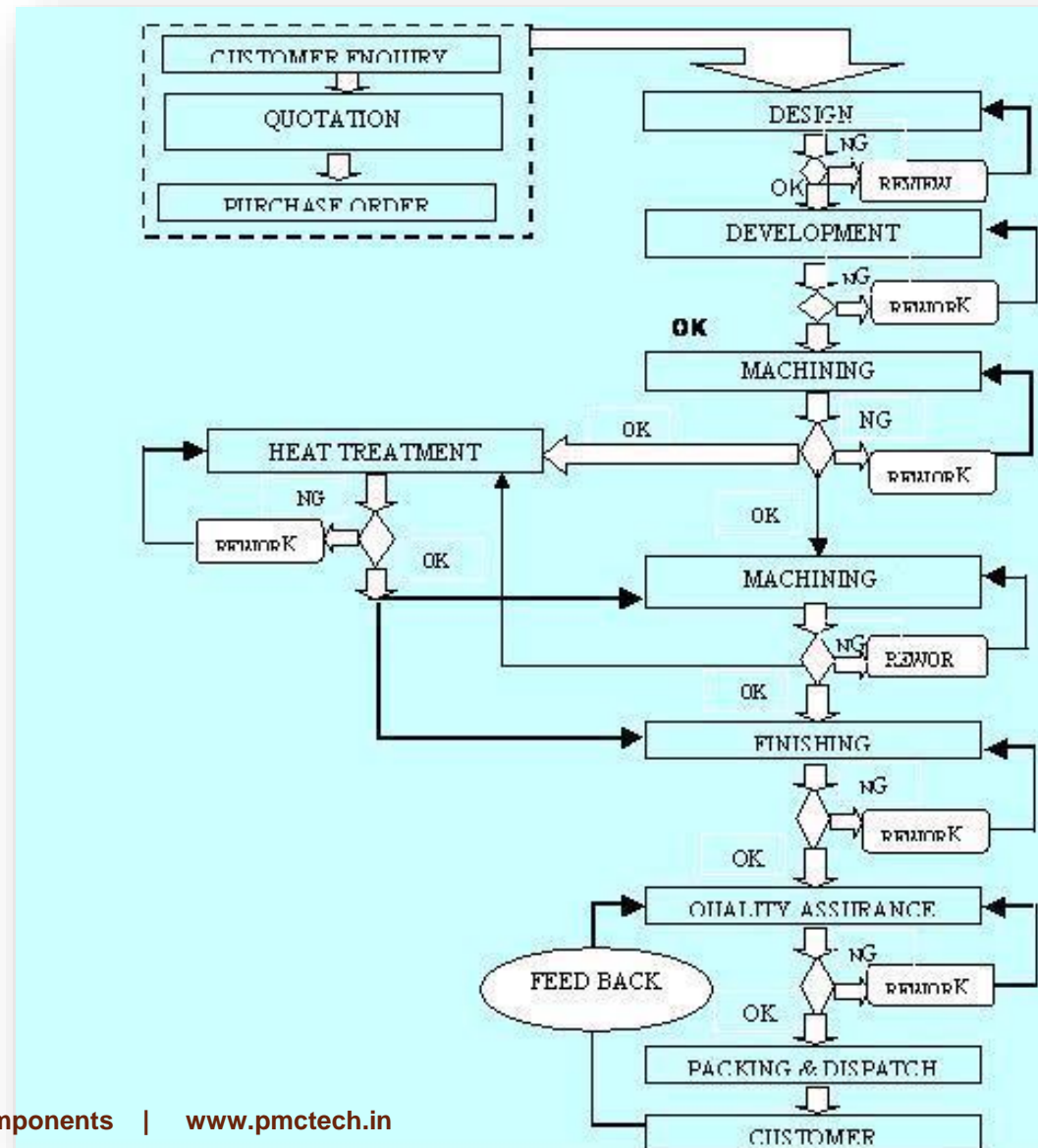
# QUALITY—OUR COMMITMENT

- To achieve highest level of Customer satisfaction through continuous improvement in our products and service.
- Implementing SPC to minimize rejections during manufacturing.
- Identify necessary and avoidable costs.
- Set targets to reduce avoidable costs.

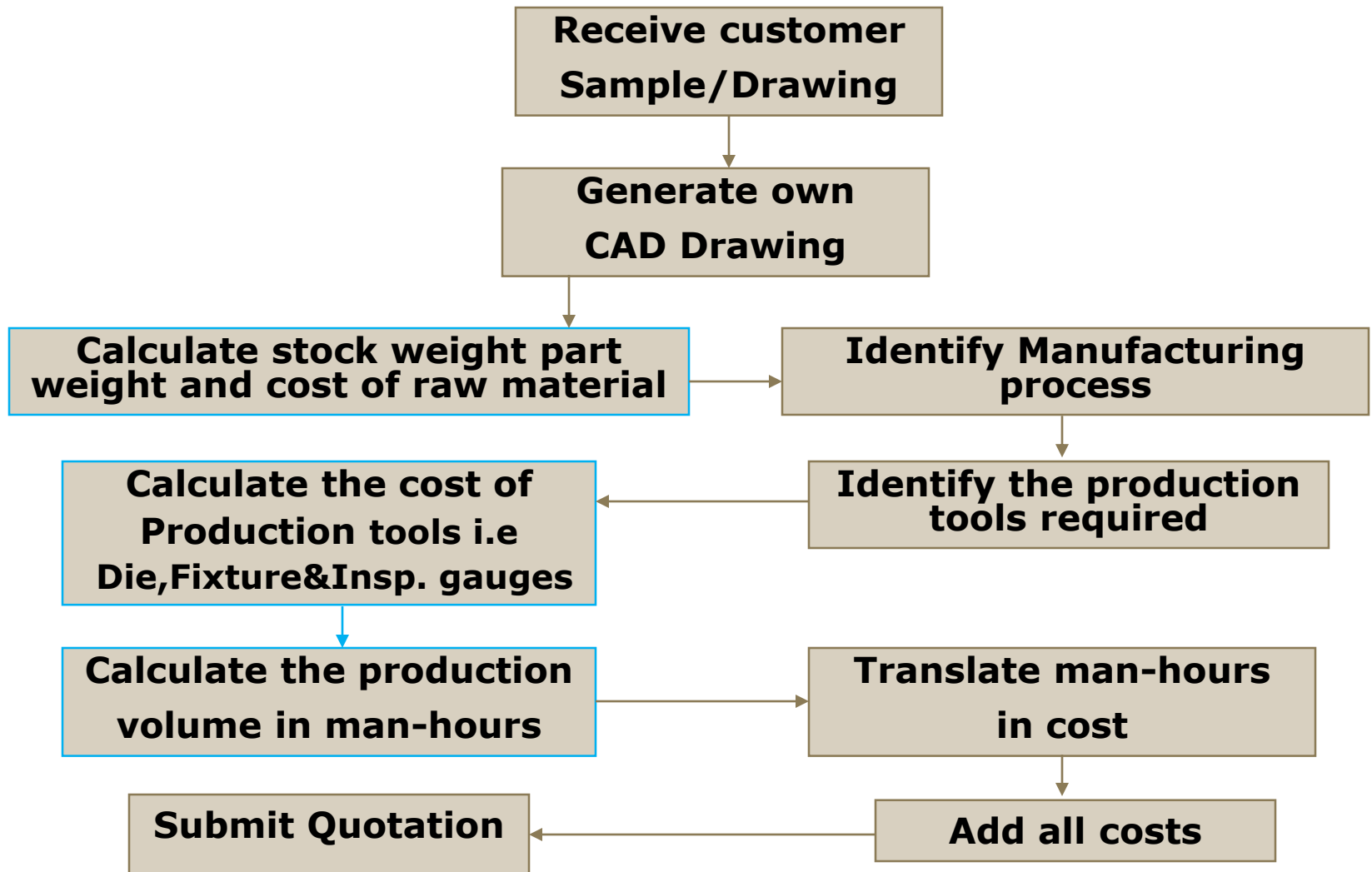
# TRADE OFFER

- Customer oriented procedure for undertaking business.
- Response to enquiries within 24 hours.
- Development process starts immediately on approval of quotation.
- Tooling cost is charged to customer upon approval of sample.

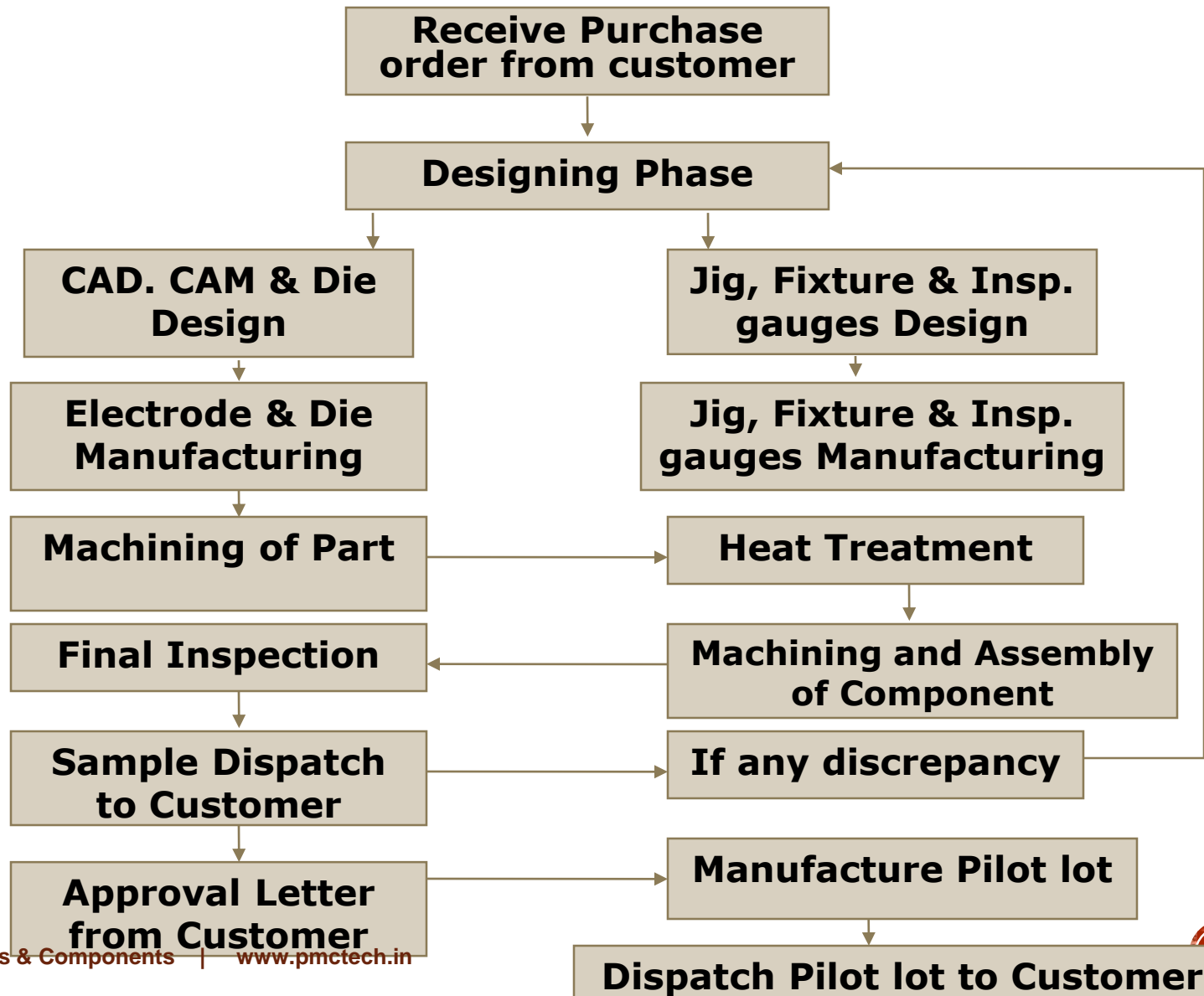
# Manufacturing Process



# Handling of Enquiry



# Preparation of Sample & Pilot lot





# EQUIPMENT LIST

## DIE SHOP & TOOL ROOM

- CNC Vertical Machining Centers (VMC).
- PC based CAD / CAM
- CNC Turning & Machining Centers
- Electric Discharge Machine(30x50) -ZNC
- **CNC, Wire Cut Electronica**
- Surface Grinder
- Horizontal surface and Cylindrical grinding

# EQUIPMENT LIST

## Machine Shop

- CNC Turning & Machining Centers
- Drilling Machine
- Cylindrical & Surface Grinding
- Horizontal & Vertical Milling
- Lathe Machine
- Surface Grinder
- Auto Lathe Machine Dia.(25mm,32mm,42mm)
- E.D.M. Machine 5030 Electronica
- E.D.M ALTRA ZNC - RATNAPARKI
- CNC, Wire Cut Electronica

# MOULDING MACHINES LIST

- Horizontal Injection Moulding M/C 20 TON  
(150\*150\*150)
- Horizontal Injection Moulding M/C  
60TON(300\*300\*300)
- Horizontal Injection Moulding M/C  
100TON(350\*350\*350)
- Horizontal Injection Moulding M/C 130TON  
(400\*400\*400)

# **CERTIFICATES / AWARDS**

- **CERTIFICATE OF APPRECIATION** by Trelleborg Automotive India Pvt. Ltd.(supplier meet 2011).
- **CERTIFICATE OF APPRECIATION** by Trelleborg Automotive India Pvt. Ltd.(supplier meet 2012).
- **CONTINUOUS 'A' GRADE RATING** as Supplier Performance rating Evaluate by SMIEL ( A Unit of Motherson Sumi System Ltd.)

# EQUIPMENT LIST

## Testing & Inspection

- Surface Plate Granite 24 “x” 24
- Height Gauge 12” Mitutoyo
- Digital Vernier & Ordinary Vernier Mitutoyo
- Micrometer Mitutoyo 0 To 25, 25 To 50, 50 To 75, 75 To 100.
- Puppy Dials 2 Micron.
- Plunger Dials 2 Micron.
- Profile Projector

# Thank You...

 Think before you print.